

ГЛАДКОВ

Н О В О Е П Л А Т Ь Е К О Р О Л Я .

ПАРТИТУРА.

№ 1546

N 1 ТАНЕЦ ИГЛЫ (I, II)

J. Ткачев

Alegretto scherzando

Симфония "Новое название России" п. 2. Тамара

с. н. н. 1-11

СИМФОНИА БИБЛИОТЕКА
№ 299550
ВСЕОБЩНОГО
РАДИО

Fl

Ob

Cl

Jonica

Tuba
Drums

Sil.
C-eli

Arpa

V-ni I
II

V-la

Cello

Scherzoso Solo

mf

mt

(div)
122

pizz
mt

Jonica

Sil.

Arpa

V-ni I
II

V-la

Cello

mf

qab

mf

2

H1546

«Новое название России»

H1546 K

Hand 12/12 Hand

Handwritten musical score for a band. The instruments listed on the left are: Tr. (Trumpet), Cl. (Clarinet), Tuba, Sil. (Saxophone), Drums, and Organo (Organ). The score is divided into sections marked with circled numbers 3 and 4.

Section 3:

- Tr. (Trumpet):** Starts with a circled 3 and the word "Solo".
- Cl. (Clarinet):** Starts with a circled 3 and the word "Solo".
- Tuba:** Features a section labeled "Tapen" with a circled 3.
- Sil. (Saxophone):** Features a section labeled "Tapen" with a circled 3.
- Drums:** Features a section labeled "Tapen" with a circled 3.
- Organo:** Features a section labeled "Tapen" with a circled 3.

Section 4:

- Cl. (Clarinet):** Starts with a circled 4 and the word "Solo".
- Organo:** Starts with a circled 4 and the word "Solo".

The score includes various musical notations such as notes, rests, and dynamic markings like *p*, *f*, *mf*, *mp*, *crce.*, and *div*. There are also some handwritten annotations and corrections throughout the piece.

7 V / 3rd notes
Solo
T. Laps.

Fl piccolo
Ob
Cl

Truba
Drums
C-lli

V-u
V-la
Cello

Fl
Ob
Cl

Truba
Drums
C-lli

V-u
V-la
Cello

V (Oteroza u go konisa II Bar).

9

Handwritten musical score for measures 7-9. The score includes staves for Flute (Fl), Oboe (Ob), Clarinet (Cl), Violin (Vn), Viola (Vla), Cello (Cl), Bass (B), Trumpet (Tr), Trombone (Tbn), and Percussion (Perc). The music is in 4/4 time and features various dynamics such as *mf*, *p*, and *sol*. There are also handwritten annotations like "Solo" and "mf".

9

Handwritten musical score for measures 10-12. The score includes staves for Flute (Fl), Oboe (Ob), Clarinet (Cl), Violin (Vn), Viola (Vla), Cello (Cl), Bass (B), Trumpet (Tr), Trombone (Tbn), and Percussion (Perc). The music is in 4/4 time and features various dynamics such as *mf*, *p*, and *secco*. There are also handwritten annotations like "nuova in piccolo!" and "secco".

10

10

11

Piccolo!

Fl

Ob

Cl

Jonica

Drums

(Toms)

(уполномоченная сторона)

gob, reb, umb, opab, calbb, arb, cut#

11

arco

arco p

2+

2+

p

Jonica

G-P.

p

Tap.

M.

Solo

pliss

p

Archi

pizz

p

pizz

p

p

p

N2 Танец углы III

T. Teagob

Allegretto

1 Solo

Piccobol
Cl
Jonica

Musical notation for Piccoba, Clarinet, and Flute parts. The Piccoba part features a melodic line with various ornaments and dynamics. The Clarinet and Flute parts provide harmonic support with chords and rhythmic patterns.

Drums

Musical notation for Drums, showing a rhythmic pattern with dynamic markings like 'p' and 'mf'.

Аруа

Musical notation for Arpa (Harp), featuring arpeggiated chords and melodic fragments.

Sil

Musical notation for Sil, consisting of a few notes with dynamic markings.

V-ni II

Musical notation for Violins II, showing rhythmic patterns and dynamic markings.

V-la

Musical notation for Viola, featuring rhythmic patterns and dynamic markings.

Cello

Musical notation for Cello, showing rhythmic patterns and dynamic markings.

Te piccolo

Musical notation for Te piccolo, featuring a melodic line with dynamic markings.

Cl

Musical notation for Clarinet, showing rhythmic patterns and dynamic markings.

Jonica

Musical notation for Flute, featuring a melodic line with dynamic markings.

Ray Tap

Musical notation for Ray Tap, showing rhythmic patterns and dynamic markings.

Sil

Musical notation for Sil, consisting of a few notes with dynamic markings.

2

V-ni I

Musical notation for Violins I, showing rhythmic patterns and dynamic markings.

V-la

Musical notation for Viola, featuring rhythmic patterns and dynamic markings.

Cello

Musical notation for Cello, showing rhythmic patterns and dynamic markings.

ТАНЕЦ УГАБИ IV

T. Tsegkov

Allegretto. Scherzando.

Fl. piccolo
ob.
Cl.
Pia.т.
C-elli
Arpa
V-и
V-ла
Cello
T.
tr.
Pia.т.
C-elli
V-и
V-ла
Cello

устроена
p
Solo бр. 184
гоб, пел, умф, пат, еомф, урб, еуб.
mf
pizz
pizz
f
mf
pizz
pizz
f
f
f

гоб, пел, умф, пат, еомф, урб, еуб.
гоб, пел, умф, пат, еомф, урб, еуб.

2

Т. Ткачев

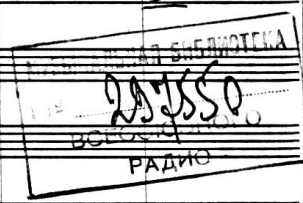
№4 Танец ильма V

Alegretto

*Тесем. Шабар манга
"Коросы"*

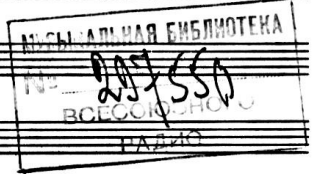
Fl
Ob
Cl
Jonica
Fagotti

Sil
Drums



T. Tregorov

Музыка "Новое начало Король"



№5 Первая песня Тильберта и Гудлама

Медленно

Handwritten musical score for various instruments:

- Flute (Fl):** Treble clef, 4/4 time. Notes: G4, A4, B4, C5. Dynamics: *mf*.
- Oboe (Ob):** Treble clef, 4/4 time. Notes: G4, A4, B4, C5. Dynamics: *mf*.
- Clarinet (Cl):** Bass clef, 4/4 time. Notes: G3, A3, B3, C4. Dynamics: *mf*.
- Bassoon (Bee):** Bass clef, 4/4 time. Notes: G3, A3, B3, C4. Dynamics: *mf*.
- Drums:** 2/4 time signature. Rhythmic notation: > P P P > P P P. Dynamics: *p*.
- Celli (Celi):** Bass clef, 4/4 time. Notes: F2, C3, G2, F2. Dynamics: *f*.
- Chit (Chit):** Bass clef, 4/4 time. Notes: F2, C3, G2, F2. Dynamics: *f*.
- Canto:** Treble clef, 4/4 time. Notes: G4, A4, B4, C5. Dynamics: *f*.
- Vini I & II (Vini I, II):** Treble clef, 4/4 time. Notes: G4, A4, B4, C5. Dynamics: *mf*.
- V-le (V-le):** Treble clef, 4/4 time. Notes: G4, A4, B4, C5. Dynamics: *mf*.
- Celli (Celi):** Bass clef, 4/4 time. Notes: G3, A3, B3, C4. Dynamics: *mf*.
- C. basso (C. basso):** Bass clef, 4/4 time. Notes: G2, F2, E2, D2. Dynamics: *p*.

Новое начало король

Flute

Oboe

Clarinet

Bassoon

Cornet

Drums

Celli

Cont

F G B E₇⁽⁵⁾ E₇ Am B Gm₇ E₇ A₇

(moder)

Archi

2

Empty musical staves at the top of the page.

3

Corno

Musical notation for the Corno part, including notes, rests, and dynamic markings such as *Solo*, *ut*, and *p*. The notation is spread across several staves.

Des₇ Gm₇ F F Es Es F Dm

Musical notation on a single staff, possibly for a vocal line or another instrument.

3

Musical notation on two staves, including notes and rests.

Musical notation on a single staff, including notes and rests.

3

Four sets of empty musical staves, each consisting of a treble and bass clef staff, intended for guitar and bass parts.

4

Handwritten musical notation for guitar and bass. The guitar part (top two staves) features a melodic line with slurs and accents. The bass part (bottom two staves) features a rhythmic accompaniment with slurs and accents. A box containing the number '4' is placed above the first measure.

Drums
Chit

Handwritten notation for drums and chitrist. The drum part (top staff) uses rhythmic symbols (vertical lines with flags) to indicate patterns. The chitrist part (bottom staff) shows a sequence of notes: F , E_s , F , G , B , C , D .

Canto

Handwritten musical notation for the canto part, consisting of a single staff with a treble clef. The notation includes a melodic line with slurs, accents, and dynamic markings such as mf and mt . A box containing the number '4' is placed above the first measure.

Empty musical staves at the top of the page.

Musical notation for the first system, including a circled measure number '5' and a boxed measure number '6'. The notation includes various notes, rests, and dynamic markings such as *f*, *mf*, and *pp*. A *Solo* marking is present above the staff.

Chord progression notation: $\textcircled{2}$ B B^b Es₇ As Des₇ Gm₇ F F

Empty musical staves in the middle section of the page.

Musical notation for the second system, including a circled measure number '5' and a boxed measure number '6'. The notation includes notes, rests, and dynamic markings such as *pp*, *f*, and *arco*. A circled *Solo* marking is present above the staff.

Empty musical staves for strings and woodwinds.

7

Solo

Solo

f

Fl
Ob
Cl
Acc

Drums

C.lli

Cont

F Es F G B C

p

Canto

Handwritten musical score for Canto and guitar. The Canto part includes notes with slurs and dynamics. The guitar part includes chords and techniques like *non div*, *div*, and *pizz div*. A circled '7' is present above the guitar staff.

non div

div

pizz div

7

Empty musical staves for the top section of the score.

9 *dim*

2
Flute (Fl) Solo 8
Oboe (ob) *mp*
Clarinet (Cl) *mp*
Acoustic Bass (Ace) *p*
Corno (Corno)
Drums *pp*

Chit *F* *F* *F* *F* *p*

Empty musical staves for the middle section of the score.

Canto
9
dim *non div* *dim*
pizz *(pizz)* *p* *p* *p*

4 *dim* *p*

№7 Вторая песня Тильберта и Гудлама
 1 Мы платим шведом... 1

Т. Ткачев

Свертасина (Тесина) 1

Handwritten musical score for a symphony. The score includes staves for Flute (Fl), Oboe (Ob), Clarinet (Cl), Bassoon (Bsn), Trumpet (Tromba), Drums, Cymbals (Sil), Chimes (Chit), Arpa, Violin I (V-ni I), Violin II (V-ni II), Viola (V-la), Cello (Cello), and Double Bass (Clava). The score is written in Russian and includes lyrics in Cyrillic. The music is in 3/4 time and features various dynamics and articulations. A stamp from the State Library of the Russian Federation is visible in the upper right corner.

Lyrics in the first system: Красн. *Новое платье короля*

Lyrics in the second system: *Взвоем свистрею*

Lyrics in the third system: *Взвоем свистрею*

Lyrics in the fourth system: *Взвоем свистрею*

Lyrics in the fifth system: *Новое платье короля*

Взвоем свистрею
 "Новое платье короля"

Handwritten musical score for a symphony orchestra, featuring various instruments and vocal parts. The score is divided into two systems.

System 1:

- Flute (Fl):** Includes a circled '3' and a 'Solo' marking with a 'b' (flat) below it.
- Oboe (Ob):** Similar to the flute part.
- Clarinet (Cl):** Similar to the flute part.
- Arco (Arc):** Includes a 'w+p' (with piano) marking.
- Sil:** Silence.
- Drums:** Includes rhythmic notation.
- Chit:** Chorus with notes: E_{sm}^6 Es E_{sm}^6 Es E_{sm}^6 Es E_{sm}^6 Es Es Ges Ges Fm Es.
- Canto:** Vocal line.
- V-m I/II:** Violin parts.
- V-la:** Viola.
- Cello:** Cello.
- C. basso:** Contrabass.

System 2:

- Flute (Fl):** Includes a 'Solo' marking.
- Oboe (Ob):**
- Clarinet (Cl):**
- Arco:** Includes a 'Solo arco' marking.
- Sil:** Silence.
- Chit:** Chorus with notes: Es Ges Ges Fm Es.
- Drums:** Includes rhythmic notation.
- Canto:** Vocal line.
- Archi:** Arch instruments, including 'arco' and 'w+p' markings.

Handwritten notes 'Meyenne' appear on the right side of the score, near the Flute and Canto staves.

Вдохновение

5

Tr
ob
cl
acc
Tuba
Drums
Sil
Oit
Aya
Canto

Handwritten musical score for various instruments and voice. The score includes staves for Tr (Trumpet), ob (Oboe), cl (Clarinet), acc (Accordion), Tuba, Drums, Sil (Saxophone), Oit (Oboe/Clarinet), Aya (Aya), and Canto (Canto). The music is written in a staff with a treble clef and a key signature of one sharp (F#). The tempo is marked with a common time signature (C). The score includes various musical notations such as notes, rests, and dynamic markings (mf, f, p, sfz, secce). The Canto part includes lyrics in Cyrillic: "меди!", "Вдохновение", "ири е-деи о-вгос еиош мрш", and "на че-те каменс а-и-а". The score also includes a section marked "Solo" for the Tuba and Drums.

5

Sil

Canto

Handwritten musical score for a full orchestra and vocal soloist. The score is written on multiple staves, each labeled with an instrument or voice part. The music is in a key with one flat (B-flat major or D minor) and a 4/4 time signature. The score includes various musical notations such as notes, rests, dynamics (e.g., *mf*, *f*, *pp*), and articulation marks. A boxed number '7' is present in the upper right area of the score. The vocal line includes lyrics in a non-Latin script, possibly Indonesian, with syllables like 'ke ka-o-do-por' and 'ka-ka-o-do-por'. The orchestration includes strings (Violins I and II, Violas, Cellos, Double Basses), woodwinds (Flutes, Clarinets, Bassoons, Saxophones), brass (Trumpets, Trombones, Tuba), and percussion (Drums, Cymbals, Snare). The score concludes with a final dynamic marking of *f*.

Tr

ob

Cl

Ace

Tuba

Drums

Sil

Ant

Arpa

Canto

I
II

Archi

7

Solo

(no strings)

mf

(no strings)

ES

Gas

mf

Gas

ES

ES

ES

ES

ES

ES

ES

ES

a

ke ka-o-do-por

a

ka-ka-o-do-por

(pizz) *f*

(pizz) *f*

f

Сертнанно №8 Парад костюмов

Г. Ткачев

Handwritten musical score for a band. The score is divided into two systems. The first system includes parts for Flute (Fl.), Clarinet (Cl.), Alto Saxophone (Alto), Trumpet (Труба), Trombone (Труба), Piano (Арта), Organ (Орган), Percussion (Perc.), Violin I (V-n I), Violin II (V-n II), Viola (V-la), Cello (Cello), and Double Bass (C-бас). The second system includes parts for Flute (Fl.), Clarinet (Cl.), Piano (Арта), Percussion (Perc.), Violin I (V-n I), Violin II (V-n II), Viola (V-la), Cello (Cello), and Double Bass (C-бас). The score contains various musical notations, including notes, rests, dynamics (mf, p, con sord., uniss), and performance instructions like 'mimato' and 'pizz'. There are also some handwritten annotations and markings, such as '2' and '1' in boxes, and 'Solo' above a flute part.

*) Партии I и II скрипок замещаются на одной строчке
 расписаны отдельно, двойные ноты расписываются как I; за неимением
 себя + отлетом (non div).

Handwritten musical score for a symphony orchestra. The score is written on multiple staves, each labeled with an instrument. The key signature is one sharp (F#) and the time signature is 3/4. The score includes various musical notations such as notes, rests, and dynamic markings.

Instrument Labels: Fl. (Flute), Cl. (Clarinet), Tramba (Trumpet), Trone (Trumpet), Piatti (Violin), arpa (Harp), and another Cl. (Clarinet).

Key Features:

- Fl.:** Includes a *tr* (trill) and a circled **3** (triple).
- Cl. (top):** Marked *Solo* with a slur over the first few notes.
- Tramba:** Marked *cantabile Solo* and *mf*.
- Trone:** Marked *p*.
- Piatti:** Marked *Zegno* and *p*.
- arpa:** Marked *8* and *3* in a box.
- Bottom Cl.:** Marked *mf*.

Dynamic Markings: *p*, *mf*, *f*, *pp*, *ppz*.

Other Notations: A circled **3** in a box appears in the bottom left. A circled **3** in a box appears in the bottom right. A circled **3** in a box appears in the bottom right. A circled **3** in a box appears in the bottom right.

Handwritten musical score for the first system, featuring the following instruments and markings:

- Cl:** Clarinet part with dynamic markings *mf* and *p*.
- Tz ba:** Trombone part with dynamic marking *mf* and the instruction *Solo cant.*
- Tz ne:** Trumpet part with dynamic marking *p*.
- Arpa:** Harp part with the instruction *Solo*.
- Piatti:** Piano part with dynamic marking *mf* and a boxed measure number **4**.
- Drums:** Drum part with dynamic markings *mp* and *up*, and the instruction *(pizz)*.

Handwritten musical score for the second system, featuring the following instruments and markings:

- Cl:** Clarinet part.
- Tz ba:** Trombone part.
- Tz ne:** Trumpet part.
- Ugna:** Organ part.
- Tegno:** Tenor part with dynamic marking *mf* and the instruction *espr.*
- Arco:** String part with the instruction *arco*.

8 [5]

Five empty musical staves, each consisting of a grand staff (treble and bass clefs).

[5]

Musical score for rehearsal mark 5, consisting of four staves. The top staff is a vocal line with lyrics. The second staff is a guitar line with a 'pizz' (pizzicato) marking and a 'p' (piano) dynamic. The third and fourth staves are piano accompaniment. The score is divided into two systems by a double bar line. The first system contains measures 1-4, and the second system contains measures 5-8. The key signature has one sharp (F#).

[6]

Five empty musical staves, each consisting of a grand staff (treble and bass clefs).

Musical score for rehearsal mark 6, consisting of four staves. The top staff is a vocal line with lyrics. The second staff is a guitar line with a 'pizz' (pizzicato) marking and a 'p' (piano) dynamic. The third and fourth staves are piano accompaniment. The score is divided into two systems by a double bar line. The first system contains measures 1-4, and the second system contains measures 5-8. The key signature has one sharp (F#). Performance markings include 'non div' (non-diviso) and 'div' (diviso).

[6]

6 7

Handwritten musical score for measures 6 and 7. The score includes staves for Flute (Fl.), Clarinet (Cl.), Bassoon (Bass.), Trumpet (Tromb.), Percussion (Perc.), and Strings (Archi). The Flute part has a "Solo" marking. The Percussion part includes "Pia. Cassa" (Pia. Cassa). The strings are marked with "p".

Handwritten musical score for measures 8 through 12, marked as a Coda. The score includes staves for Flute (Fl.), Clarinet (Cl.), Organ (Organo), Percussion (Perc.), and Cello/Double Bass (C. b.). The Flute part is marked with "5/8 Coda". The Clarinet part has dynamic markings of "mf p". The Organ part has a "Cassa" marking and dynamic markings of "mp". The Percussion part has a "Pia. Cassa" marking and dynamic markings of "p" and "mp". The Cello/Double Bass part has dynamic markings of "p" and "mp".

D.C. ~~pp~~ Coda.
al Fine

Handwritten musical score for a woodwind and string ensemble. The score is written on ten staves. The instruments are labeled on the left: Flute (Fl), Clarinet (Cl), Alto Saxophone (Sax), Trumpet (Tone), Piano (Pia), and Percussion (Perc). The music is in 4/4 time and features various dynamics and articulations. The first staff (Flute) has notes with accents and a fermata. The second staff (Clarinet) has notes with accents and a fermata. The third staff (Alto Saxophone) has notes with accents and a fermata. The fourth staff (Trumpet) has notes with accents and a fermata. The fifth staff (Piano) has notes with accents and a fermata. The sixth staff (Percussion) has notes with accents and a fermata. The seventh staff (Piano) has notes with accents and a fermata. The eighth staff (Percussion) has notes with accents and a fermata. The ninth staff (Percussion) has notes with accents and a fermata. The tenth staff (Percussion) has notes with accents and a fermata. The score includes dynamic markings such as *mp*, *p*, and *pp*, and articulations such as accents and fermatas. A large handwritten number '8' is visible on the right side of the score.

fill

Moderato

№9. БАРАТ (ТАМЕУ)

J. Тугаков

The image shows a handwritten musical score for an orchestra and solo instruments. The score is divided into three systems. The first system includes staves for Flute (Fl.), Oboe (Ob.), Clarinet (Cl.), Bassoon (Bee.), Cor Anglais (Corno. Inaug.), Trumpet (Timp.), and Cymbals (Cintu.). The second system includes Violin I (V-ni I), Violin II (V-la), Cello (Cello), and Double Bass (C-basso). The third system includes Flute (Fl.), Oboe (Ob.), Clarinet (Cl.), Bassoon (Bee.), Cor Anglais (Corno.), and Tamburim. The score features various musical notations, including notes, rests, and dynamic markings such as *mf* and *p*. There are also performance instructions like *Solo marcato* and *I Solo*. The score is marked with first and second endings (1 and 2) in several places. The tempo is indicated as *Moderato* at the top left.

T-uno
Timp.

Musical score for T-uno and Timp. parts. The T-uno part is on a single staff with a treble clef and a 3/4 time signature. The Timp. part is on a single staff with a bass clef and a 3/4 time signature. The Timp. part includes dynamic markings: *p*, *f*, *f*, *f*, and *f*. There is a boxed '3' above the first measure of the Timp. part. The T-uno part includes dynamic markings: *f*, *f*, *f*, and *f*. There is a boxed '3' above the first measure of the T-uno part. The T-uno part includes the instruction *I. T-uno* *more.* above the first measure of the second system.

Fl
Cl

Musical score for Fl and Cl parts. The Fl part is on a single staff with a treble clef and a 3/4 time signature. The Cl part is on a single staff with a treble clef and a 3/4 time signature. The Fl part includes dynamic markings: *Solo*, *Solo mf*, and *mf*. The Cl part includes the instruction *Cl. cambia in Cl. basso* below the first measure of the second system.

Timp

Musical score for Timp part. The Timp part is on a single staff with a bass clef and a 3/4 time signature. The Timp part includes dynamic markings: *p*, *p*, and *tu*. There is a boxed '3' above the first measure of the Timp part.

Handwritten musical notation on a single staff, featuring a series of sixteenth notes with stems pointing up, grouped by a slur. A circled number '6' is written at the end of the staff.

Clk.

Handwritten musical notation for a Clarinet (Clk.) on a single staff, showing a sequence of notes with various accidentals (sharps and naturals).

Acc.

Handwritten musical notation for an Accordion (Acc.) on a single staff, showing chords and notes.

Triangl

Handwritten musical notation for a Triangle (Triangl) on a single staff, consisting of rhythmic patterns of notes with stems pointing down.

A large section of the page consisting of multiple empty musical staves. A large, diagonal line is drawn across these staves, starting from the bottom left and extending towards the top right. A vertical line is drawn through the middle of these staves, intersecting the diagonal line. At the intersection, there is a small, hand-drawn symbol resembling a stylized leaf or a vertical oval with a central stem.

6

Urech

Handwritten musical notation on a single staff, featuring a series of notes with stems pointing up, possibly representing a vocal line or a specific instrument part.

Four sets of empty musical staves, each consisting of a grand staff (treble and bass clefs).

Archi

Handwritten musical notation for strings. The first staff has dynamic markings: $\frac{p}{f}$, $\frac{p}{f}$, $\frac{p}{f}$, and $\frac{p}{f}$. The notation includes various rhythmic patterns and rests.

Fl

Handwritten musical notation for Flute, featuring a melodic line with slurs and dynamic markings.

Ob

Handwritten musical notation for Oboe, featuring a melodic line with slurs and dynamic markings.

Cl.

Empty musical staff for Clarinet.

Bcc.

Handwritten musical notation for Bassoon, featuring a melodic line with slurs and dynamic markings.

7

Handwritten musical notation for strings, starting with a box containing the number 7. The notation includes dynamic markings: *more.*, $\frac{p}{f}$, *more.*, $\frac{p}{f}$, *more.*, $\frac{p}{f}$, and *more.*

+

8

Cl. *Solo* *mf*

Corno *Solo* *mf*

Tamburino

Cello *mf* *pizz*

Cl

Corno

T-rino

Cello

Cl *clar. cambia in Cl. Basso*

Corno

T-rino

Cello *arco Solo*

10

T-rino

V-no I *Solo* *mf*

V-no II *mf*

V-la *mf*

Cello *mf*

C-b. *pizz* *f* *mf*

11

Fl
 Ob
 Cl-basso
 Acc.

Handwritten musical score for measures 11 and 12. The Flute (Fl) and Oboe (Ob) parts feature melodic lines with slurs and accents. The Clarinet Bass (Cl-basso) part has a steady rhythmic accompaniment. The Accordion (Acc.) part provides harmonic support with sustained chords. A box containing the number '11' is positioned above the Flute staff at the start of the first measure.

T-rino

Violini

Handwritten musical score for measures 11 and 12 for the Violins (Violini). The score is written for two staves, showing a melodic line with various articulations and dynamics. A box containing the number '11' is positioned above the first staff at the start of the first measure.

12

Fl
 Ob
 Cl-basso

Cl-basso cambia in Clar.

Handwritten musical score for measures 12 and 13. The Flute (Fl) and Oboe (Ob) parts continue their melodic lines. The Clarinet Bass (Cl-basso) part has a note marked with a plus sign. A handwritten note 'Cl-basso cambia in Clar.' is written to the right of the Clarinet Bass staff, indicating a change in instrument. A box containing the number '12' is positioned above the Flute staff at the start of the first measure.

Timp

T-rino

Handwritten musical score for measures 12 and 13 for the Timpani (Timp) and Triangle (T-rino). The Timpani part shows a rhythmic pattern with a dynamic marking 'p'. The Triangle part has a rhythmic accompaniment.

12

V-n I
 V-n II

Handwritten musical score for measures 12 and 13 for the Violins I (V-n I) and Violins II (V-n II). Both parts feature melodic lines with slurs and accents. A box containing the number '12' is positioned above the Violins I staff at the start of the first measure.

FR
Ob
Cl

9

13

T-tino
Timp

13

Handwritten musical score for a symphony orchestra, featuring woodwinds, brass, and percussion. The score is divided into two systems.

System 1 (Measures 1-4):

- Flute (Fl):** Melodic line with slurs.
- Oboe (Ob):** Melodic line with slurs.
- Clarinet (Cl):** Melodic line with slurs.
- Trumpet (Tr):** Melodic line with slurs.
- Timpani (Timp):** Rhythmic pattern with notes.
- Drum (Dr):** Rhythmic pattern with notes.
- Snare (Sn):** Rhythmic pattern with notes.
- Cymbal (Cy):** Rhythmic pattern with notes.
- Coro (Corno):** Melodic line with slurs.
- T-rino (Trombone):** Melodic line with slurs.
- Tempo (Tempo):** Melodic line with slurs.

System 2 (Measures 5-8):

- Flute (Fl):** Melodic line with slurs.
- Oboe (Ob):** Melodic line with slurs.
- Clarinet (Cl):** Melodic line with slurs.
- Trumpet (Tr):** Melodic line with slurs.
- Timpani (Timp):** Rhythmic pattern with notes.
- Drum (Dr):** Rhythmic pattern with notes.
- Snare (Sn):** Rhythmic pattern with notes.
- Cymbal (Cy):** Rhythmic pattern with notes.
- Coro (Corno):** Melodic line with slurs.
- T-rino (Trombone):** Melodic line with slurs.
- Tempo (Tempo):** Melodic line with slurs.

Handwritten annotations include *glis* (glissando) and *ut* (breath mark) above notes in the woodwind and brass parts. A *G-P.* marking is present in the upper right of the first system. The score concludes with a double bar line and a slash through the staves.

Empty musical staves at the top of the page.

Handwritten musical score for the first system. It includes a vocal line with lyrics "Sob" and a box containing the number "3". The score features various musical notations such as notes, rests, and dynamic markings like *mp* and *p*.

Handwritten musical score for the second system, continuing the piece with notes and rests.

Piatti
Cassa
Sic

Handwritten musical score for the third system, including a bass line with notes and rests.

Handwritten musical score for the fourth system, featuring a box with the number "3" and dynamic markings such as *div*, *pizz*, *arco*, and *arco*.

Empty musical staves at the top of the page.

Musical notation for the first system, including a treble clef, a 4/4 time signature, and various notes and rests. A first ending bracket labeled '1.' and a second ending bracket labeled '2.' are present. There are handwritten annotations above the notes, including 'f' and 'p'.

Corno
Tromba
Tromba

Musical notation for the Corno, Tromba, and Tromba parts, showing rhythmic patterns and melodic lines.

Drums
S.l.

Musical notation for the Drums and S.l. parts, featuring rhythmic patterns with stems and flags.

Musical notation for the lower section, starting with the instruction 'non clv'. It includes multiple staves with notes and rests.

Segue



Ace

Solo

Corno

Tromba

Tromba

Piutti
Cann

T-20

Sil



Segue

Empty musical staves for the top section of the score.

5

Handwritten musical notation for the first system, including a *Solo* marking and a *p* dynamic marking.

Handwritten musical notation for the second system, including *Corno*, *Trombe*, and *Trombe* labels and *p* dynamic markings.

Handwritten musical notation for the third system, including *Ti-ro* and *Cassa* markings.

Handwritten musical notation for the fourth system, including a *Sil* marking.

Handwritten musical notation for the fifth system, including an *Arpa* marking.

5

Handwritten musical notation for the sixth system, including *div*, *div*, and *V-no Solo* markings.

Handwritten musical notation for the seventh system.

Handwritten musical notation for the eighth system.

Handwritten musical notation for the ninth system, including an *arco* marking.

5

Empty musical staves at the top of the page.

Musical notation for the first system, including a boxed measure marker [B]. The notation includes various rhythmic patterns and dynamic markings such as *mf*, *bf*, *4+*, *+*, *tace*, *tr*, and *tr*.

Musical notation for the second system, featuring a *p* dynamic marking and a *Solo* section with a *f* dynamic marking.

Platti
Cassa

Musical notation for the Percussion part, showing rhythmic patterns with vertical stems and flags.

Arpa

Musical notation for the Harp part, including a large slur over a complex melodic line.

Musical notation for the third system, starting with a boxed measure marker [E].

Musical notation for the bottom system, including a *arco marc.* marking and a *f* dynamic marking.

Empty musical staves with a square box containing the number 4 at the top of the fifth staff.

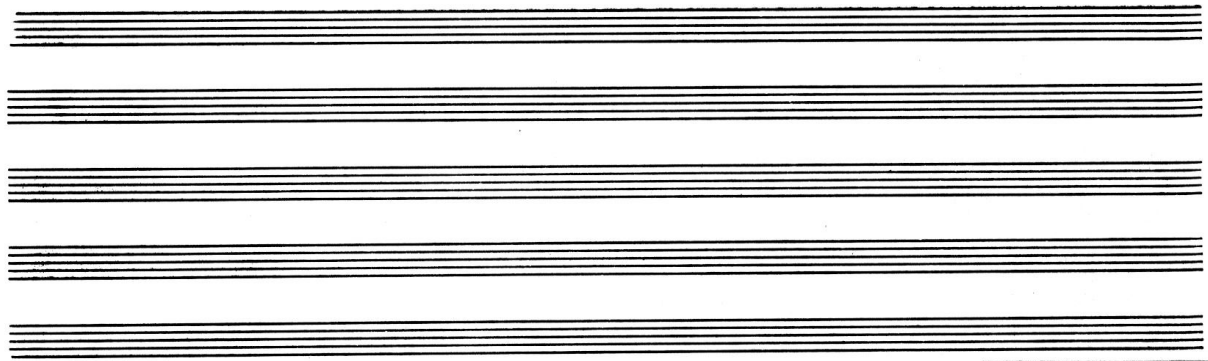
Handwritten musical notation for the first system, including treble and bass clefs, notes, rests, and dynamic markings such as *h*, *f*, and *h+*.

Handwritten musical notation for the second system, featuring a *con Sord.* marking and dynamic markings like *f*.

Piatti
T-20
Cassa

Handwritten musical notation for the third system, including a *T-20* marking and dynamic markings like *f*.

Handwritten musical notation for the fourth system, including a *tutti div* marking, dynamic markings like *ff*, and a *pizz* marking.



Глас перекроста

Ha

Sil

Handwritten musical notation on five staves, including a large 'rit' marking on the right side.

Trpo

Il fine des octaves

Handwritten musical notation for strings, including dynamic markings such as *mp*, *mf*, and *rit*.

P.
Trio
C.
Srl

Handwritten musical notation for Piano, Trio, Cello, and Solo parts, including dynamic markings like *rit* and *pratti*.

rit

2. Solo

Handwritten musical notation at the bottom of the page, including dynamic markings like *rit*.

rit

TRHO

8

Solo

Handwritten musical score for a woodwind and percussion ensemble. The score is divided into two systems. The first system includes parts for Flute (Fl), Oboe (ob), Clarinet (cl), Acoustic Saxophone (Ace), Cor Anglais (Corno), Trombone (Tromba), Trumpet (Tr-ue), Percussion (Pia. Cassa), Arpa, Cello (Celli), and Contrabass (C. basso). The second system includes parts for Flute (Fl), Acoustic Saxophone (Ace), Cor Anglais (Corno), Trombone (Tromba), Trumpet (Tr-ue), Cassa, Arpa, Cello (Celli), and Contrabass (C. basso). The score features various musical notations including notes, rests, dynamics (p, mf, f, ppp), articulation (accents, slurs), and performance instructions like 'Solo' and 'tutti'. There are also some handwritten annotations and markings throughout the score.

Скрипка. "Новое негаше коралл" Т. Ткачев

N 11 ЗАКЛЮЧЕНИЕ
И ТИТРЫ I

РАДИО
ВОССОДВНОГО
РАДИО

Fl
Ob
Cl
Bee.
Corno
Tromba
Tromba
Drums
C-lli
Chit
Arpa
Vi I
Vi II
V-la
C-lli
C-basso

"Новое негаше коралл"

Empty musical staves for strings and woodwinds.

Cl
Bcc

Handwritten musical notation for Clarinet and Bassoon. The notation includes notes with stems and beams, and dynamic markings such as *p* and *f*. A box with the number '2' is written above the staff.

Drums

Handwritten musical notation for Drums, consisting of rhythmic patterns represented by vertical lines and slashes on a staff.

Chit

Handwritten musical notation for Chitarra (Guitar). The notation includes chords and notes with stems. Chords are labeled as *F*, *G*, *B*, *E₇⁵*, *E₇*, and *A_m*.

Empty musical staves for strings.

(supra voce).

2

Handwritten musical notation for vocal and piano parts. The notation includes notes with stems and beams. The word *non dar* is written above the vocal line. The piano part includes notes with stems and beams, and dynamic markings such as *f*.

1 3 2. Solo

Fl

Ob

Cl

Acc

Drums

Chit

Chit

Apr

Des Gm7 F F F ES ES F Dm A

Cornop

4

Fl

Ob

Cl

Acc

Cornop

Drums

Chit

F ES F G B C D

4

arco

pp

mf

pp

5

6

Corno

Drums

C. ell.

Sax
Chit

D B B^b Es₇ As Des₇ Gm₇ F F

5

6

Handwritten musical notation for the upper part of the score, including a circled number '7' and a 'Solo' marking.

Handwritten musical notation for the middle part of the score, featuring a 'Solo' marking and various rhythmic patterns.

Tr-ba

Handwritten musical notation for the Trumpet part, including the instruction 'con Sord.'.

Drums

Handwritten musical notation for the Drums part, including the instruction 's.p.'.

(Cl+)

Handwritten musical notation for the Clarinet part, including the notes F, F#, F, G, B, C.

Handwritten musical notation for the lower part of the score, including markings for 'non div', 'div', and 'pizz'.

9

2

trull trull

Solo

mt

p

Coro

Drums

C. ll.

F F F F Es Es F p A

p

9

diu

cantabile

cantabile

pizz

p

60

10

R
ob
ce
Acc.
Corno
Tr-ba
Tr-ne
Drums
C-ell:

Musical score for R, ob, ce, Acc., Corno, Tr-ba, Tr-ne, Drums, and C-ell. The score includes various musical notations such as notes, rests, and dynamic markings like 'mp' and 'Solo'.

Arpa

Musical score for Arpa. It features a 'Solo' section with dense chordal textures and various musical notations.

10

pizz
+ pizz
+ pizz
+ pizz
+ pizz
p